



3D SymbolDesigner

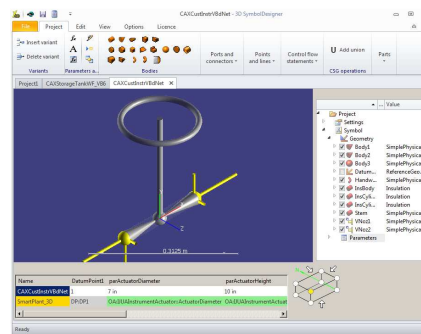
Use Case 1: Create piping symbols (on-the-fly instruments)

CHALLENGE

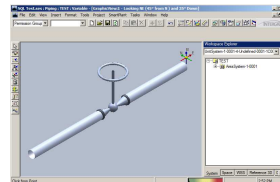
Creation of a piping symbol that cannot be found in the available piping symbols delivered with the standard Intergraph installation of Smart 3D

WORKFLOW STEPS

1. Arrange objects in GUI



2. Parameterise objects
3. Export symbol
4. Load/distribute exported data
5. Place symbol



SOLUTION

- Simple creation of parametric piping symbols using different object types (bodies, ports and connectors, parameters)
- Extraction of all necessary data including symbol definition (Visual Basic B6 or VB .Net), bulkload file (requires some modifications for piping symbols), documentation, symbol icon (snapshot of **3D SymbolDesigner** graphic)
- The part using the symbol definition can be placed after some standard procedures (publish symbol on symbol share, load bulkload file with Intergraph bulkload utility)

About CAXperts

Our mission is to improve the productivity of our clients by simplifying key tasks and processes. To achieve this we use our detailed knowledge of engineering systems and work processes to deliver engineered efficiency. Learn more at www.caxperts.com

Contact & information:

CAXperts GmbH
P.: +49 89 96 97 72 0

Carl-Zeiss-Ring 4
85737 Ismaning – Germany

www.caxperts.com/3dsd
info@caxperts.com





3D SymbolDesigner

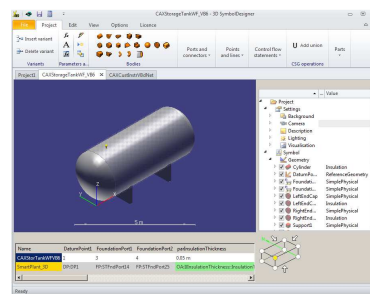
Use Case 2: Create equipment symbols with user defined forms

CHALLENGE

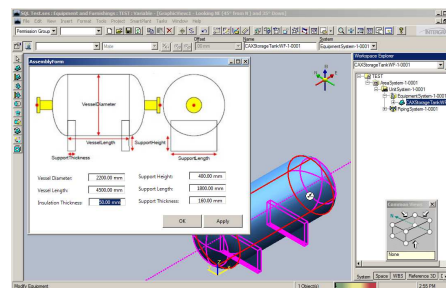
Creation of an equipment symbol with user defined form.

WORKFLOW STEPS

1. Arrange objects in GUI



2. Parameterise objects
3. Export symbol
4. Load/Distribute exported data
5. Place symbol



SOLUTION

- Simple creation of parametric equipment symbol by using of different object types (bodies, ports and connectors, parameters)
- Extraction of all necessary data including symbol definition (VB6 or VB.Net), template for the user defined form, bulkload file (adapt attribute FormDefinition to assign the user defined form), documentation, symbol icon (snapshot of 3D SymbolDesigner graphic)
- The equipment using the symbol definition can be placed after some standard procedures (publish symbol definition and user defined form on symbol share, load bulkload file with Intergraph Bulkload utility)

About CAXperts

Our mission is to improve the productivity of our clients by simplifying key tasks and processes. To achieve this we use our detailed knowledge of engineering systems and work processes to deliver engineered efficiency. Learn more at www.caxperts.com

Contact & information:

CAXperts GmbH
P.: +49 89 96 97 72 0

Carl-Zeiss-Ring 4
85737 Ismaning – Germany

www.caxperts.com/3dsd
info@caxperts.com

