

CAXperts

Plant IT-Solutions

MDP-Manager Basic for PDS®

Features:

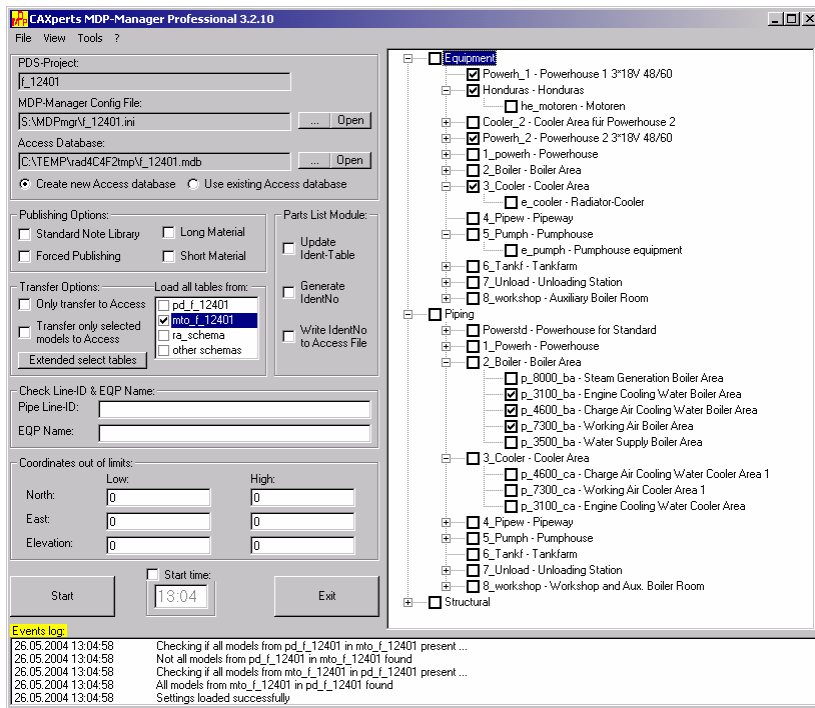
- Exports all PDS data into an Access® file
- Simple and rapid extraction into MS Access®
- Decoding of PDS data
- Design data verification
- Viewing and visualising of MDP error logs
- Generation of individual queries and reports without special PDS knowledge
- Automatic generation of project control information



MDP-Manager – Extract all required PDS data easily and whenever you want

MDP-Manager exports automatically and in minutes all data from Intergraph PDS to a Microsoft Access® file. MDP-Manager is a Microsoft Windows based application that does not require any PDS- or CAD-specialist to define own queries and reports out of Intergraph's PDS. MDP-Manager decodes and simplifies many data during the extraction. The standard note library description is extended to the base tables. Date and imperial sizes are converted into readable formats. All key data can be obtained in indexed form to increase the performance of queries. MDP-Manager makes it possible that the verification of design data can already be accomplished in PDS. It immediately responds to lines which are not in the process line list or to mandatory attributes which are not entered. This enables you to check the quality of your designers' work shortly. MDP-Manager generates automatically the following additional helpful information:

- date of last placement on a line to see the topicality of isometrics and drawings
- which lines and equipments are shown in which drawings
- from-to-list for the P&ID



System Requirements:

300 MHz Pentium II processor or better; Min 128 MB RAM; Min. 1 MB disk space + min. 25 MB space for data source; CD-ROM access; Microsoft Windows NT 4.0, 2000 or XP; Intergraph PDS, Version 6.4.1 or higher; Microsoft MS Access 97, 2000, XP or 2003

MDP-Manager allows the removal of scrap lines from the Microsoft Access® file to have only verified data in the queries and reports. MDP-Manager views and visualises the error log of the Material Data Publisher to become aware of missing items and an indication of errors in pipe specifications to avoid mistakes in the data take off. MDP-Manager query samples:

- Take off data (quality checked)
- Filling capacity per pipeline and medium
- Surface of certain lines designed within a certain period
- List of lines for which isometrics and drawings have not been created or which are outdated
- Insulation list including insulation type, temperature, diameter, etc.
- Interfaces

MDP-Manager enables you to do easy reporting for the P&ID data schema.

Contact & Information

CAExperts GmbH
Carl-Zeiss-Ring 4
D-85737 Ismaning
Germany

CAExperts The Xperts for plant design automation

P.: +49 (89) 96 97 72 0
F.: +49 (89) 96 97 72 11
Email: Info@CAExperts.de
Internet <http://www.caxperts.com>

