

CAXperts

Plant IT-Solutions

MDP-Manager Professional for PDS®

Features:

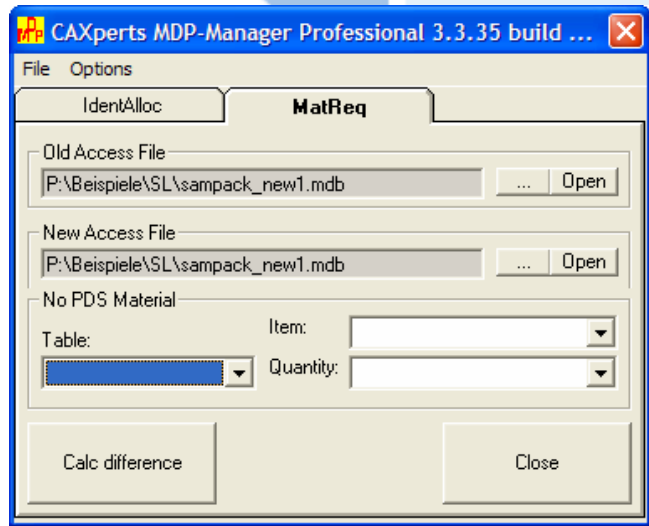
- Includes all functions of MDP-Manager Basic
- Simple take off and requisition functionality
- Easy and efficient way of importing and updating design data of your PDS model
- Batch function to integrate the update for the isometric extraction



Easy and efficient input and completion of PDS data

MDP-Manager Professional provides the full range of functionality of the MDP-Manager Basic to extract easily quality checked data from Intergraph's PDS, including features such as:

- Simple and rapid data extraction into MS Access®
- Decoding of PDS data
- Design data verification
- Minimal training required
- Viewing and visualizing of MDP error logs
- Generation of individual queries and reports without special PDS-knowledge
- Automatic generation of helpful information



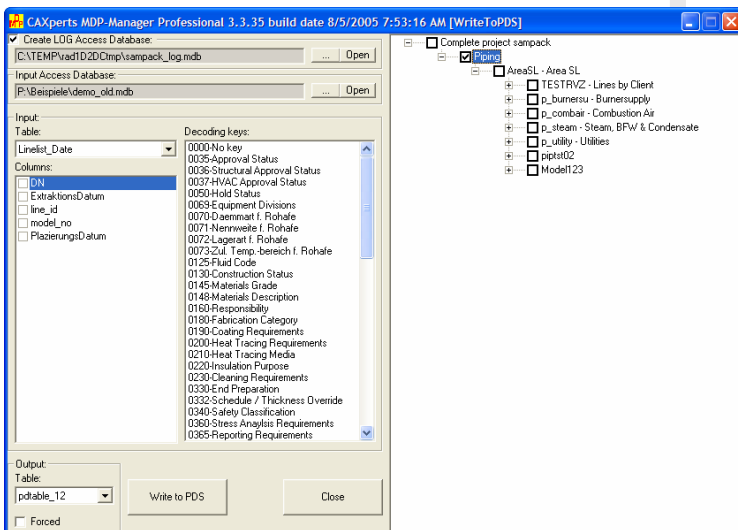
MDP-Manager Professional enables you to extract very easily take off information from PDS. Adding of stock codes (size – dependent commodity codes) can be effected automatically without maintaining the size dependent table. Requisition functionality is available to determine the quantity changes of item codes at any time of the design phases.

MDP-Manager Professional has integrated simple methods to provide design data updates into any RIS-schema. These updates are logged for verification. MDP-Manager Professional allows the integrated update by line-id for all lines, before you extract the isometrics.

MDP-Manager Professional saves a lot of engineering hours to maintain and complete design data. Data modifications can be imported easily into your design model.

- Data revision in the design
- Adding data from the line list
- Planning of construction activities (test systems, test pressure, painting)
- Process data (pressure, temperature)

This enables you to use this data in the PDS model for design review sessions, isometrics and drawings.



System requirements:

Clients: 300 MHz Pentium II processor or better; Min 128 MB RAM; Min. 1 MB disk space + min. 25 MB space for data; CD-ROM access; Microsoft Windows NT 4.0, 2000, XP; Intergraph PDS, Version 6.4.1 or higher; Microsoft MS Access 97, 2000, XP or 2003

Contact & Information

CAXperts
The Xperts for plant design automation

CAXperts GmbH
Carl-Zeiss-Ring 4
D-85737 Ismaning
Germany

P.: +49 (89) 96 97 72 0
F.: +49 (89) 96 97 72 11
Email: Info@CAXperts.de
Internet http://www.caxperts.com

CAXperts
Plant IT-Solutions

Errors excepted. Subject to change without notice.