

# CAXperts

Plant IT-Solutions

## PDS-Admin Tool for PDS®

### Features:

- Creation of PDS projects, including:
  - loading of standard pipe classes
  - setting up Isogen
  - drawing frames
- Exchanging data and files
- Copying projects and subprojects
- Saving and Restoring projects and subprojects
- Upgrade check for PDS projects
- Extension of design table attributes
- Viewing and Editing of RIS tables

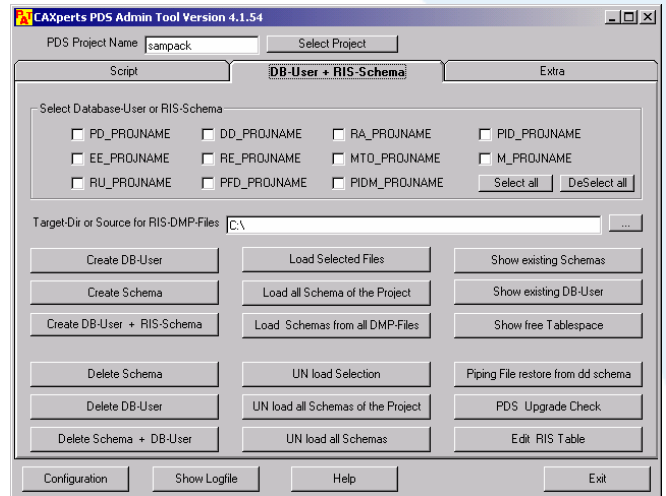
### Benefits:

- Project creation in less than 5 minutes
- Automation of administrative tasks in PDS
- Rapid data exchange
- Own script language for administration
- Easy creation of database users and RIS schemas



## PDS-AdminTool The Tool for PDS Administration

Designed for rapid and simple data exchange, the practice approved PDS-AdminTool from CAXperts offers for PDS power users and administrators a wide range of functions. An entire PDS project can be created in less than 5 minutes, including Isogen setup, loading of standard pipe classes, creation of models etc. The work is carried out using the user interface which enables even the less experienced user to do PDS administration.



CAXperts PDS Admin Tool Version 4.1.54 [EditRISTables]

Schema: pd\_sampack Table: pdtable\_102

pdtable\_102 - 46 records

type_of_rdb_d	approval_status	rdb_file_spec	path_name	network_addr	lock_owner	lock_status	lock_date	revision_date
34	1	zi_eqpms.lib	d:\pds\sk\samj	S_CX240		0	0	0
16	1	new_tut.l	d:\pds\sk\lsrdb	S_CX240		0	0	0
52	1		d:\pds\sk\lsrdb	S_CX240		0	0	0
25	1	din_pcdim.l	d:\pds\sk\samj	S_CX240		0	0	0
27	0	eua_pcdim.l	d:\pds\sk\samj	S_CX240		0	0	1028203605
19	1		ra_sampack			0	0	0
0	0		dd_sampack			0	0	0
200	0		EE_sampack			0	0	0
202	0					0	0	0
99	0	sampack.dgn	d:\pds\sk\samj	S_CX240		0	0	0
34	0	zi_eqpms.lib	d:\pds\sk\samj	S_CX240		0	0	0
16	0	new_tut.l	d:\pds\sk\lsrdb	S_CX240		0	0	0
52	0		d:\pds\sk\lsrdb	S_CX240		0	0	0
55	0	lsequip.cel	d:\pds\sk\lsrdb	S_CX240		0	0	0
11	0	rp_pjstbl.l	d:\pds\sk\samj	S_CX240		0	0	1026398153
11	1	rp_pjstbl.l	d:\pds\sk\samj	S_CX240		0	0	1042789872
22	0	rp_spbom.l	d:\pds\sk\samj	S_CX240		0	0	1027698936
54	1	rp_pjstbl.l	d:\pds\sk\samj	S_CX240		0	0	0
55	1	lsequip.cel	d:\pds\sk\lsrdb	S_CX240		0	0	0
21	1	mt_lgbom.l	d:\pds\sk\samj	S_CX240		0	0	0
19	0		ra_sampack			0	0	0
35	0	mt_spbom.l	d:\pds\sk\samj	S_CX240		0	0	1026221568
35	1	mt_spbom.l	d:\pds\sk\samj	S_CX240		0	0	1026221559
15	0	rp_note.l	d:\pds\sk\samj	S_CX240		0	0	1026204534
15	1	rp_note.l	d:\pds\sk\samj	S_CX240		0	0	1042202257
14	0	rp_labels.l	d:\pds\sk\samj	S_CX240		0	0	0
14	1	ro_labels.l	d:\pds\sk\samj	S_CX240		0	0	1040140194

## PDS-AdminTool Automatic and Interactive

Two fundamental elements go to make up the PDS-AdminTool: The Script area, which allows the user to execute administrative scripts to maintain standard tasks. It contains only a few commands and can be used for all kind of administration work. It allows the creation of new projects based on seed projects in less than 5 minutes. The "DB User and RIS schema" and "Extra" interactive area allows easily the creation of new database users and RIS schemas.

It also contains a wide range of commands:

- restore design files from the backup
- executes a PDS upgrade check to avoid time consuming upgrade procedures.
- Edit RIS Table allows the viewing and editing of any RIS Table by easy filtering functions.
- Copy PDS Models to another project.
- Check database against DDL files to verify the existing table structure or extend it.

### Contact & Information

CAXperts GmbH  
Carl-Zeiss-Ring 4  
D-85737 Ismaning  
Germany

**CAXperts**  
The Xperts for plant design automation

P.: +49 (89) 96 97 72 0  
F.: +49 (89) 96 97 72 11  
Email: Info@CAXperts.de  
Internet http://www.caxperts.com

Errors excepted. Subject to change without notice.

