

# CAXperts

Plant IT-Solutions

## PID DataManager for SmartPlant® P&ID

### Features:

- Tabular view of the SmartPlant P&ID database
- Read and write access to the SmartPlant P&ID database
- Easy visualisation of graphical components through SmartSketch
- Local project database in Microsoft® Access format
- Completely decoded select lists for required attributes

### Benefits:

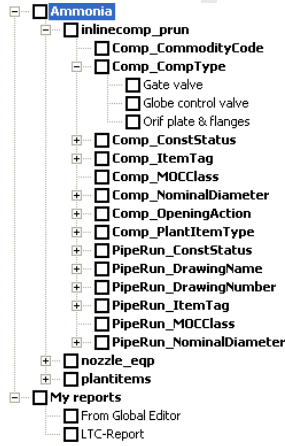
- Easy editing of SmartPlant P&ID database through tabular interface
- Multi drawing editing
- Filtering on various levels to reach the required item
- Customizable reports
- Offline database (Microsoft® Access) allows portability of SmartPlant P&ID data
- Import to SmartPlant P&ID database through easy process.



## PID DataManager– project hierarchy

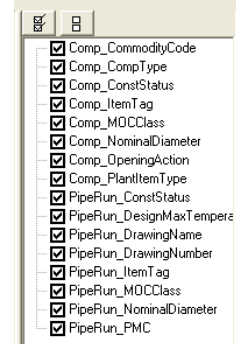
PID DataManager provides a project hierarchy in a user friendly interface which enables easy navigation to access a particular component in the plant.

The plant hierarchy is split into different plant items like Equipment, Piping, Instrumentation.



## PID DataManager– attribute-list

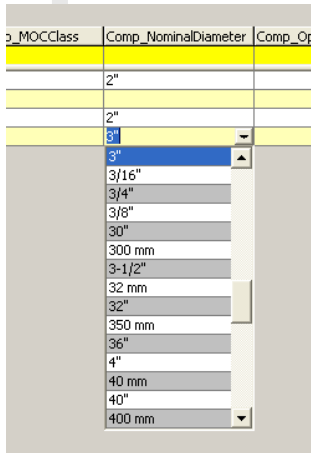
The required attributes for any of the SmartPlant P&ID item types can be selected from the list of attributes available for that particular item type.



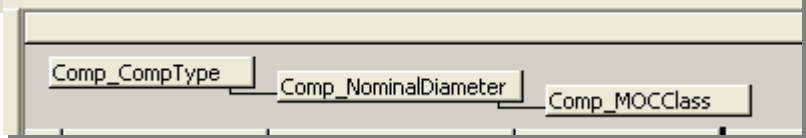
## PID DataManager– tabular view

The tabular view of the SmartPlant P&ID database enhances the editing facility and it helps the user also in creating reports and grouping components based on particular properties

A decoded select list makes the data entry easy for the user.

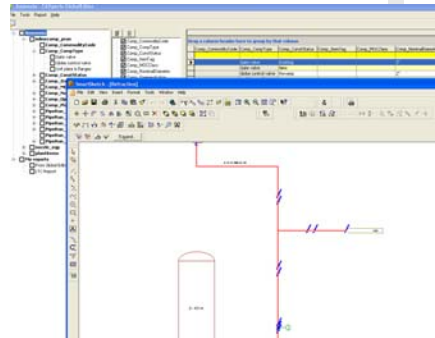


Comp_CommodityCode	Comp_CompType	Comp_ConstStatus	Comp_CommodityCode	Comp_CompType	Comp_ConstStatus	Comp_ItemTag	Comp_MOCClass	Comp_NominalDiameter	Comp_OpeningAction	Comp_PlantItemType	PipeRun_ConstStatus	PipeRun_DrawingName	PipeRun_DrawingNumber	PipeRun_ItemTag	PipeRun_MOCClass	PipeRun_NominalDiameter	PipeRun_PMC
	Gate valve	Existing		Gate valve	Existing			2"		Piping Component	New						
	Gate valve	New		Gate valve	New					Piping Component	New		140 C				
	Globe control valve	Revamp		Globe control valve	Revamp			2"		Instrument	New						
	Orif plate & flanges	New		Orif plate & flanges	New	MF-103A		1"		Instrument	New						1150"



## PID DataManager - highlighting

of components through Smart-Sketch facilitates proper attribute change for the particular component.



Defined colour identification reflects the status of the data to be changed.

Comp_CommodityCode	Comp_CompType	Comp_ConstStatus	Comp_ItemTag	Comp_MOCClass
	Gate valve	Existing		
	Gate valve	New		
	Globe control valve	Revamp		
	Orif plate & flanges	Revamp	FE-103A	

### Contact & information

CAXperts GmbH  
Carl-Zeiss-Ring 4  
85737 Ismaning  
Germany

### CAXperts The Xperts for plant design automation

Phone +49 (89) 96 97 72-0  
Fax +49 (89) 96 97 72-11  
Email info@caxperts.com  
Internet http://www.caxperts.com

