

CAXperts

Plant IT-Solutions

SpecManager for PDS®

Features:

- Automatic placement of all pipe class components
- Reporting of wrong elements
- Use MDP-Manager for report pipe class content
- Detection of all placed parts and report creation for verification against input pipe class

Benefits:

- Secure your construction process without interruption
- Increase quality of any pipe classes
- Visual control of pipe class contents

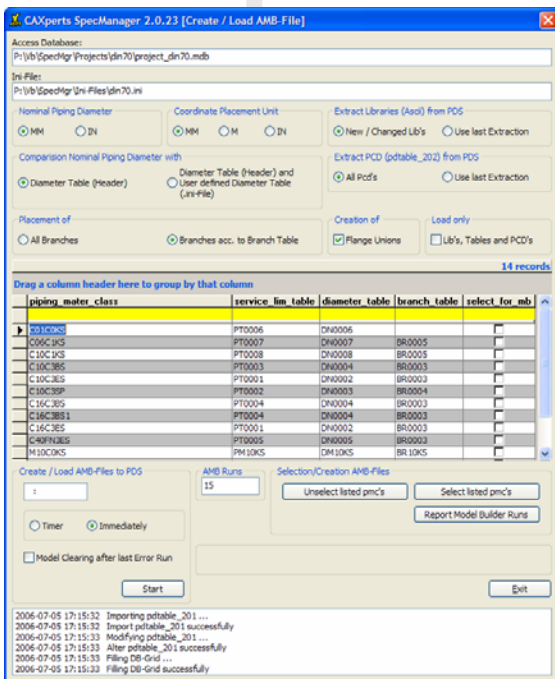


SpecManager

Especially at large projects pipe classes are often not verified, so within the planning phase errors occurred caused by wrong pipe classes. SpecManager supports the 'Alphanumeric Model Builder' automatically to place all components from this pipe class. Due to this you are able to control the report and if necessary edit the accordingly pipe class before using it.

SpecManager create reports about all parts which can not be placed.

Additionally you can use CAXperts® MDP-Manager to extract all technical relevant data e.g. material, norm, face-to-face dimension, etc. from the placed components. Get earlier verified data and secure quality in pipe classes.



Piping Mater Class: 1SN0P													Status: Successfully finished with errors		Errors: 9		Run Date: 01.07.2005 02:27:10	
Error	Error No	SubNo	Connectivity Name	DC	Rpt_1	Rpt_2	Comp.Type	Connectivity Code	Model Code	Geo Ref Std	File Set Code	CP						
<input checked="" type="checkbox"/>	1	1	601C01	1	0.75	0.75	PC	11211KJGAA127--J1-	QATR	162	-	-						
<input checked="" type="checkbox"/>	2	1	601C01	1	1	1	PC	11211KJGAA127--J1-	QATR	162	-	-						
<input checked="" type="checkbox"/>	3	1	601C01	1	1.5	1.5	PC	11211KJGAA127--J1-	QATR	162	-	-						
<input checked="" type="checkbox"/>	4	1	602C10	1	0.75	0.75	PC	0130KLJGAAD51--J1A	BLSP0	540	-	-						
<input checked="" type="checkbox"/>	5	1	602C10	1	1	1	PC	0130KLJGAAD51--J1A	BLSP0	540	-	-						
<input checked="" type="checkbox"/>	6	1	602C10	1	1.5	1.5	PC	0130KLJGAAD51--J1A	BLSP0	540	-	-						
<input checked="" type="checkbox"/>	7	1	602C11	1	0.75	0.75	PC	0130KLJGAAD51--J1A	BLSP0	540	-	-						
<input checked="" type="checkbox"/>	8	1	602C11	1	1	1	PC	0130KLJGAAD51--J1A	BLSP0	540	-	-						
<input checked="" type="checkbox"/>	9	1	602C11	1	1.5	1.5	PC	0130KLJGAAD51--J1A	BLSP0	540	-	-						

Contact & Information

CAXperts GmbH
Carl-Zeiss-Ring 4
D-85737 Ismaning
Germany

CAXperts
The Xperts for plant design automation

P.: +49 (89) 96 97 72 0
F.: +49 (89) 96 97 72 11
Email: Info@CAXperts.de
Internet <http://www.caxperts.com>

