

CAXperts

Plant IT-Solutions

Xpda for PDS®

Features:

- User friendly and workflow-oriented GUI running on Microsoft Windows®
- Unicode™ support
- Simple and timesaving administration and reference database maintenance
- Effective control for models and drawings
- “Global Project Exchange” per e-mail

Benefits:

- Significantly reduces time and effort for administration and design work with Intergraph PDS®.
- Clearly structured, simple and effective work on PDS projects
- Reduces expenses for PDS introduction and training



Xperts Personal Design Assistant (Xpda)

permits workflow-oriented performance in an intuitive user interface. With Xpda, working on PDS projects takes place in a clearly arranged tree view (navigation window).

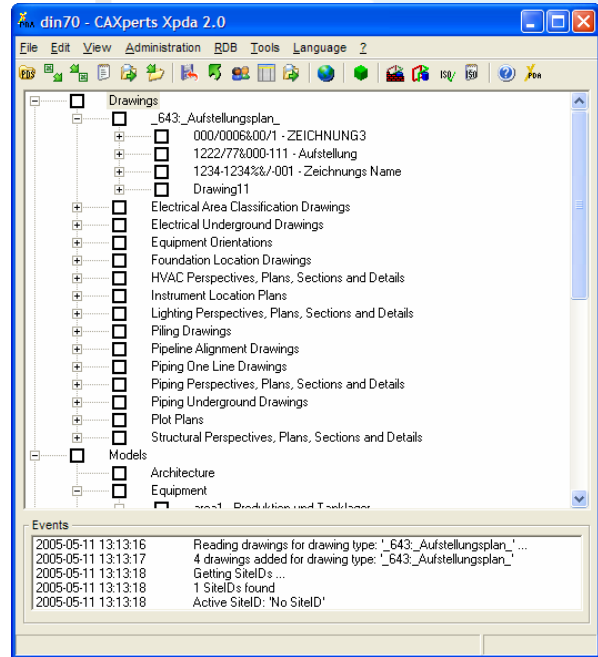
Xpda consequently supports well-known Windows features such as drag and drop or context menus (right mouse button). All user-specific settings can be saved and restored.

Significantly increases the efficiency and reduces the time for training.

Xpda supports the Unicode™ standard. The Xpda user interface can be completely adapted by the provided language editor to any language using the appropriate Windows font files.

The standard distribution includes language files for Chinese (simplified and traditional), German and English.

Greatly eases the multiple language use of PDS.

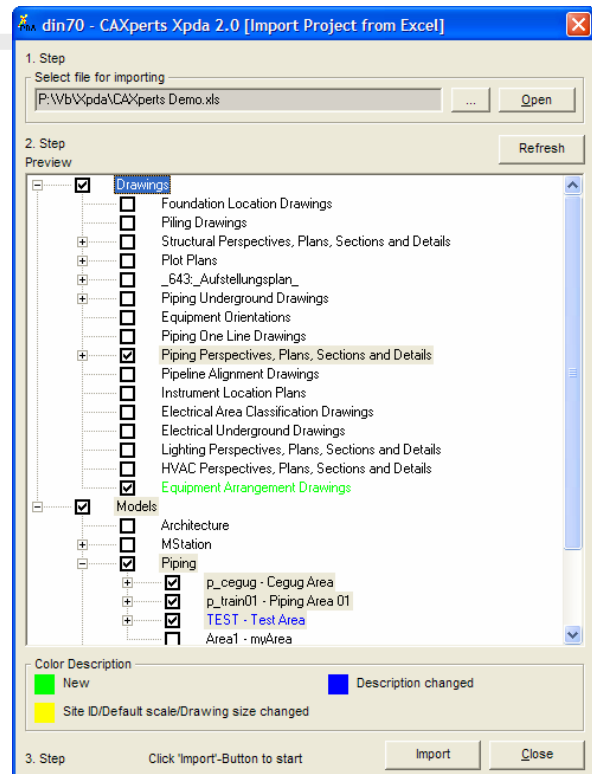


Xpda Administration

An absolute highlight of Xpda is the administration of PDS projects. The creation of new projects or the copying of existing projects by the "Copy Project" command takes place within a few minutes.

The "Backup/Restore" command allows the saving of the PDS project structure and of its models to a zip file. Some particular or all models from this file can be restored by a wizard tool. The display can be filtered by the Site ID. The zip file can be automatically sent as an e-mail attachment if needed. In this case, the zip file is split into smaller parts that fit the individual mailbox limits of the user. The rights management takes place according to the Windows user and group settings. Supported databases are Oracle® and Microsoft SQL Server.

Considerably reduces the expenses for administration.



Contact & Information

CAXperts GmbH
Carl-Zeiss-Ring 4
D-85737 Ismaning
Germany

CAXperts
The Xperts for plant design automation

P.: +49 (89) 96 97 72 0
F.: +49 (89) 96 97 72 11
Email: Info@CAXperts.de
Internet <http://www.caxperts.com>

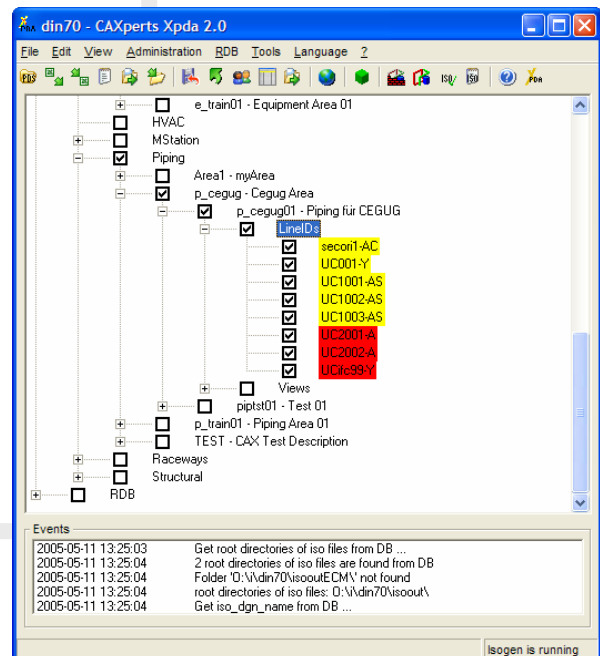
Errors excepted. Subject to change without notice.

CAXperts
Plant IT-Solutions

Xpda Project Structures of PDS

Xpda makes it possible to construct PDS project structures (disciplines, areas and models) per context menus (right mouse button). The creation of directories and files is enabled in analogy to Microsoft Windows Explorer. These can be moved or renamed afterwards via drag and drop, per context menu or per properties window. PDS project structures can be exported from any project to a Microsoft Excel file. In Excel, the structure can be edited, and then reloaded to the current PDS project. PDS models can be automatically opened in Xpda by double-clicking on the model name in the navigation window. It is also possible to show the content of PDS piping models (line ID) in the navigation window.

Similar to the display of models, Xpda shows drawings in the navigation window. The drawings can be created, deleted, moved and renamed. Drawings can also be opened by a double click in the navigation window. Also VHL processes for particular drawings can be launched in Xpda.



Xpda Menu

Xpda displays all menus for drawings, piping and equipment in a clearly structured tree view, which allows more space on the screen. These commands can be put in a user-customizable menu ('My Menu'). In addition, any other model can be started from this command window and references can be attached. Reference models can be chosen easily in the navigation window.

Contact & Information

CAXperts GmbH
Carl-Zeiss-Ring 4
D-85737 Ismaning
Germany

CAXperts
The Xperts for plant design automation

P.: +49 (89) 96 97 72 0
F.: +49 (89) 96 97 72 11
Email: Info@CAXperts.de
Internet <http://www.caxperts.com>

Errors excepted. Subject to change without notice.

CAXperts
Plant IT-Solutions

Xpda Reference Database

All files can be loaded per drag and drop. Xpda recognizes the file contents and assign them to the right place. Xpda allows the viewing of piping classes in a clear and structured way. Therefore all codelist information are decoded.

Xpda Isometrics

ISOGEN and Isoplot can be started from the Xpda navigation window. Isometrics, Error and Log files can be loaded there, too. The creation, deleting and editing of ISO Default Sets is possible in a clearly structured window.

SmartPlant® Review Support

Xpda allows easy creation and start of design review sessions from the navigation window.

Contact & Information

CAXperts GmbH
Carl-Zeiss-Ring 4
D-85737 Ismaning
Germany

CAXperts
The Xperts for plant design automation

P.: +49 (89) 96 97 72 0
F.: +49 (89) 96 97 72 11
Email: Info@CAXperts.de
Internet <http://www.caxperts.com>

