



Adapter for Autodesk Navisworks

Manual

Copyright

Copyright © 2018 CAXperts GmbH. All Rights Reserved.

Including software, file formats, and audio-visual displays; may be used pursuant to applicable software licence agreement; contains confidential and proprietary information of CAXperts and/or third parties which is protected by copyright law, trade secret law, and international treaty, and may not be provided or otherwise made available without proper authorisation.

Restricted Rights Legend

Rights reserved under the copyright laws of the Federal Republic of Germany.

Warranties and Liabilities

All warranties given by CAXperts about equipment or software are set forth in your purchase contract, and nothing stated in, or implied by, this document or its contents shall be considered or deemed a modification or amendment of such warranties. CAXperts believes the information in this publication is accurate as of its publication date.

The information and the software discussed in this document are subject to change without notice and are subject to applicable technical product descriptions. CAXperts is not responsible for any error that may appear in this document.

The software discussed in this document is furnished under a licence and may be used or copied only in accordance with the terms of this licence. **THE USER OF THE SOFTWARE IS EXPECTED TO MAKE THE FINAL EVALUATION AS TO THE USEFULNESS OF THE SOFTWARE IN HIS OWN ENVIRONMENT.**

Trademarks

CAXperts is a registered trademark of CAXperts GmbH. Intergraph, the Intergraph logo, SmartSketch, FrameWorks, SmartPlant, INtools, MARIAN, PDS, IGDS, RIS and IntelliShip are registered trademarks of Intergraph Corporation. IGDS file formats ©1987-1994 Intergraph Corporation. Microsoft and Windows are registered trademarks of Microsoft Corporation. Bentley, the Bentley logo "B," and MicroStation are registered trademarks of Bentley Systems, Inc. ISOGEN is a registered trademark of Alias Limited. Autodesk and Navisworks are registered trademarks or trademarks of Autodesk, Inc., in the USA and other countries. Other brands and product names are trademarks of their respective owners.

Table of Contents

I.	Introduction	3
II.	Setup	3
III.	Licence	4
	Site licence (local)	
	Floating (server) licence	
IV.	Working with Adapter for Autodesk	
	Navisworks	6
	Prerequisites:	
	Interactive mode	
	Command line mode	
V.	Log files	9
VI.	Contact	11
	Helpdesk	

Introduction

Adapter for Autodesk Navisworks captures 3D graphics and attributes from Navisworks sessions and stores them in UPVC file. This file is used as input for CAXperts UniversalPlantViewer Builder to generate UniversalPlantViewer or 3D PDF sessions.

Setup

Requirements:

- **Hardware (minimum):**
 - CPU: double-core, 2.5 GHz
 - RAM: 3 GB
- **Hardware (recommended):**
 - CPU: quad-core, >=3.4 GHz
 - RAM: >=8GB
 - OS, %TEMP%, input and output folders on SSD
 - Full HD resolution
- **Supported operating systems:**
 - Microsoft Windows 7-10
- Microsoft .NET Framework 4.0

Administrator rights are required on each computer to install CAXperts Adapter for Autodesk Navisworks. "Run as" is not supported.

Uninstall

To uninstall the software, select Control panel from the start menu. Then on large or small icon view, click Programs and features. If you are using category view, under Programs, click Uninstall a program.

Select the program you want to remove, and click Uninstall/Remove. Alternatively, right-click the program and select Uninstall.

Setup command line (for administrators)

The following command line options are supported by the installer:

/S:<<optional ini file>>

Allow an install to be run in silent mode. As a result, no screens or dialogs will be shown.

This command line option also has an optional INI file that can be passed containing session variable values. For example:

```
"C:\output\setup.exe" "/S:C:\setupvars.ini"
```

This will cause the session variables in the INI file to be used for the setup. The INI file should be in the format:

```
[SetupValues]
```

```
%AppFolder%=C:\Program Files\MyProduct
```

/U:<<XML config file>>

This command line option must be used when calling the uninstall program from the command line. This command also has an optional XML file that can be passed containing session variable values. For example:

```
"C:\Program Files\MyProduct\uninstall.exe" "/U:C:\Program Files\MyProduct\irunin.xml"
```

Licence

CAXperts software supports two types of licences:

Site licence (local)

Domain based licences are restricted to machines within a 5 miles (8 kilometres) radius at a specific geographic location (building) for which the licence key file was issued for. There is no limitation regarding the number of users or machines.

CAXperts will need your Current domain name to issue a licence file (.lic).

The licence file has to be stored on a local or network location accessible by the machine running the CAXperts product; a licence server is not required.

The location of the licence file should be defined on every machine with the CAXperts product installed, which can be done

- **Either by setting the environment variable**
CAXPERTS_LICENSE_FILE=C:\Program Files (x86)\CAXperts\Licensing\
- **Or by setting the registry key**
HKEY_CURRENT_USER\Software\FLEXlm License Manager\CAXPERTS_LICENSE_FILE=C:\Program Files (x86)\CAXperts\Licensing\

Multiple licence key file locations should be separated by semicolons (";").



If the licence key file location is not defined, "C:\Program Files (x86)\CAXperts\Licensing\" is used

The licence key file may be renamed (including the extension). The CAXperts product will check the content of all files in the licence folder(s) for valid keys.

Changes to the key path (in the environment variable or registry key) are read during the next start of the CAXperts product.

Floating (server) licence

Floating licences require a FlexNET server (ladmin or lmgrd) accessible by the machine running the CAXperts product. The licence key file is typically located on the FlexNET server machine. The licence key file defines the maximum number of seats which can be used at the same time.



Every running instance of the CAXperts software product will require one seat, no matter if the application is running multiple times on the same or different machine(s).

New instances can only be started as long as seats are available and the FlexNET server is accessible.

The location of the licence server must be defined on every machine with the CAXperts product installed, which can be done

- **Either by setting the environment variable**
CAXPERTS_LICENSE_FILE=@YourServerName
- **Or by setting the registry key**
HKEY_CURRENT_USER\Software\FLEXlm License
Manager\CAXPERTS_LICENSE_FILE=@YourServerName

Every computer name must be preceded by the @ symbol. Multiple licence server locations should be separated by semicolons (“;”).

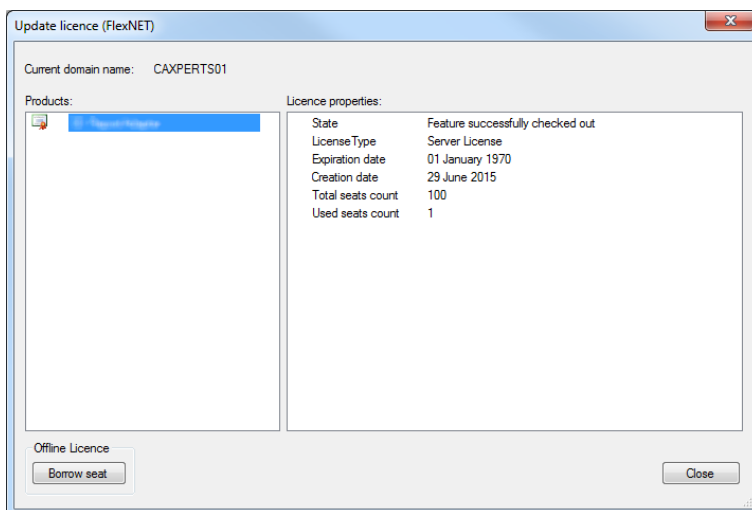
YourServerName is the Windows computer name of the machine running lmadm (FlexNET server). If lmadm is running on a non-default port, the port number should be defined like this: port@YourServerName.



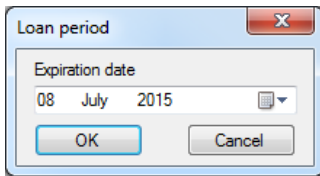
Changes to the server path (in the environment variable or registry key) are read during the next start of the CAXperts product.

Borrowed licences

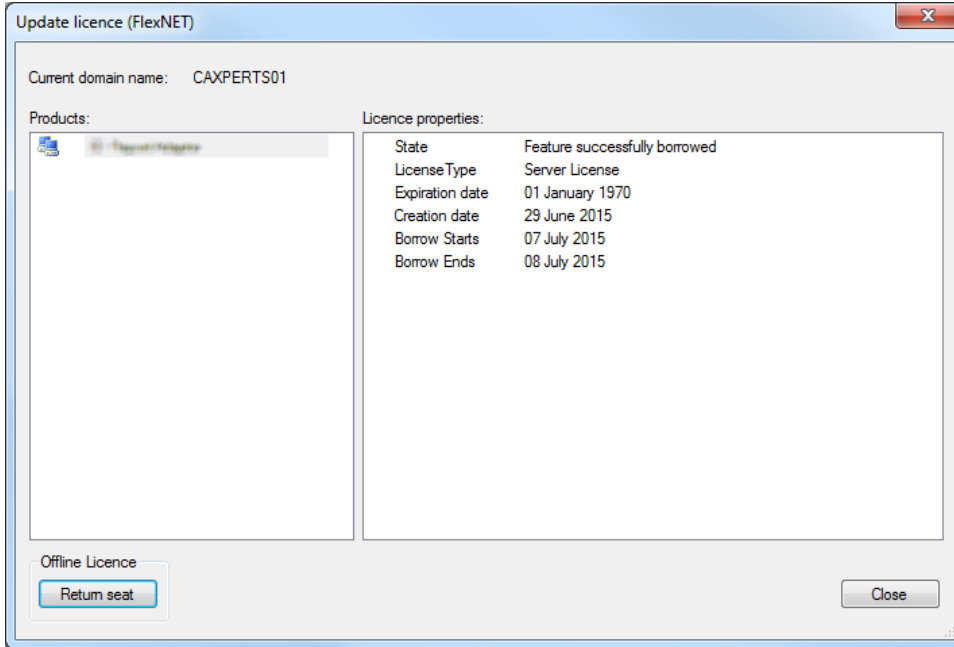
Licence seats can be borrowed for a period of time from the server and saved to the local machine. Once the seat has been borrowed the CAXperts application can be used without any connection to the FlexNET server.



To borrow a licence seat press the Borrow seat button, define the loan period (up to 7 days) and press OK. When the borrowed seat expires it gets automatically returned back to the FlexNET server.



The seat can be returned earlier by pressing the Return borrowed seat button.



i Without a valid licence file the software will run in demo mode.

Working with Adapter for Autodesk Navisworks

Prerequisites:

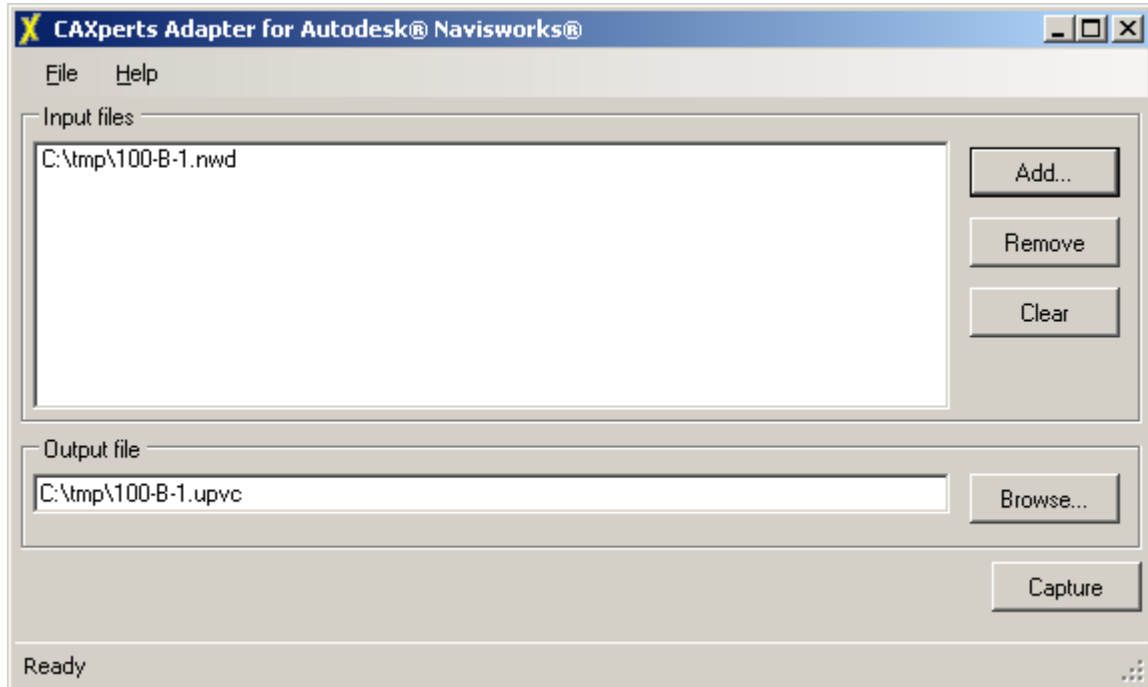
Adapter for Autodesk Navisworks works with Navisworks Simulate or Manage version 2017/2018/2019

After installation of CAXperts Adapter for Autodesk Navisworks you should check in Navisworks if the "CAXperts Adapter for Autodesk Navisworks Plugin" is available in Tool add-ins



Interactive mode

Start Adapter for Autodesk Navisworks and select an input file or many input files. All files supported by Navisworks are supported by the adapter.





Output file: defines the path to the UPVC output file. The file contains all required information (like graphics or attributes) in order to generate UniversalPlantViewer or 3D PDF output using CAXperts UniversalPlantViewer Builder software.

If the UPVC output file already exists, Adapter for Autodesk Navisworks will work in update mode and re-capture only files where the last modified date has changed.



Adapter for Autodesk Navisworks has an built-in mode for parallelization of input files.

For a faster processing of the input files it is better to have multiple smaller files instead of one big file of the same model.

Command line mode

Adapter for Autodesk Navisworks can also be used in command line mode.

Use the following command to show the command line arguments:

```
C:\>"C:\Program Files\CAXperts\Navisworks Adapter\Navisworks Adapter.exe" /?
```

Command line arguments:

```
C:\Users\sb>"C:\Program Files\CAXperts\Navisworks Adapter\Navisworks Adapter.exe" /?
Navisworks Adapter.exe -input:C:\Example.nwd [-output:C:\Output\Example.upvc] [-log]

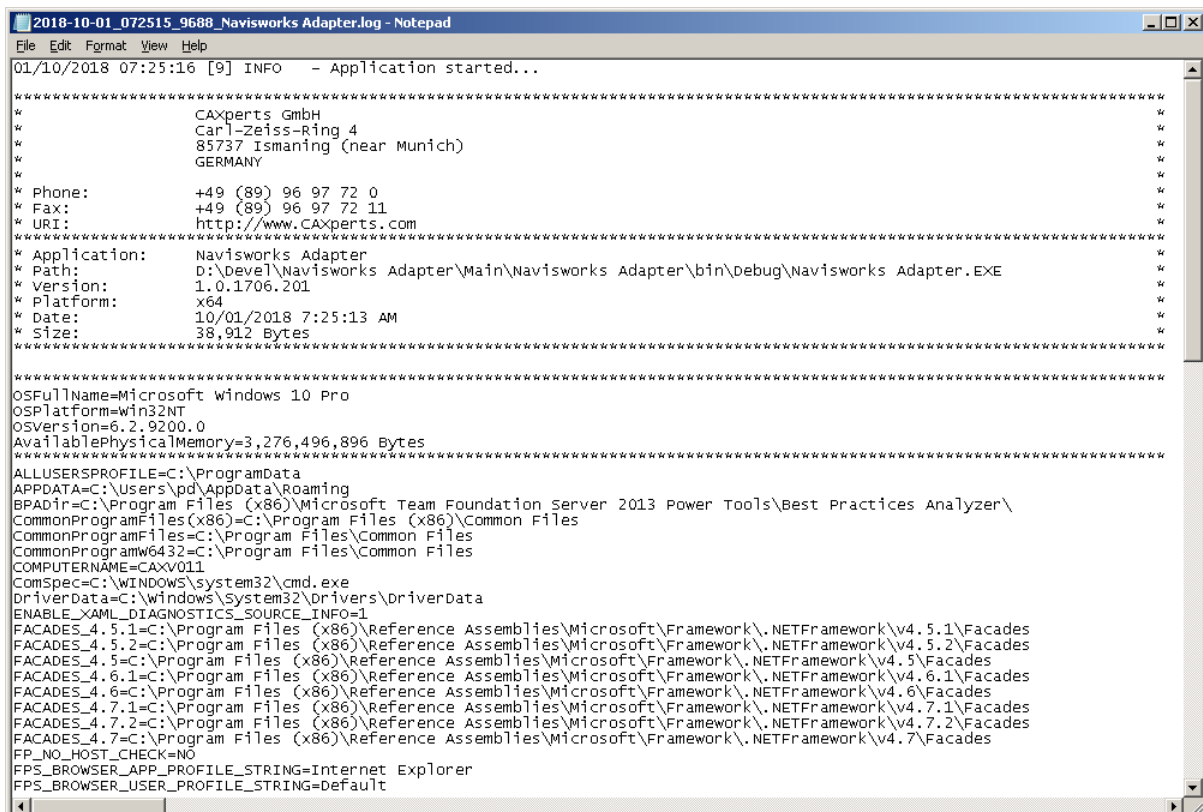
-input:C:\Example.nwd <Occurance: AtLeastOnce, Help Text: Path to a Navisworks file.>
-output:C:\Output\Example.upvc <Occurance: AtMostOnce, Help Text: Path of the output file.>
-log <Occurance: Arbitrary, Help Text: Log file path. If not defined, log file is placed in c:\TEMP>
```

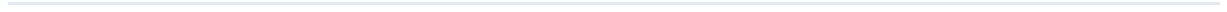
Example:

```
"C:\Program Files\CAXperts\Navisworks Adapter\Navisworks Adapter.exe" -input: C:\data\example.nwd -
output: C:\UPVC\example.upvc
```

Log files

The software creates log files in the local TEMP directory (e.g. "C:\Temp\Navisworks Adapter\"). The user can also open these files by double-clicking on the CAXperts Adapter for Autodesk Navisworks status bar:





Contact

Contact CAXperts' support by email, online, or phone:

CAXperts GmbH
Carl-Zeiss-Ring 4
85737 Ismaning
Germany

<https://www.caxperts.com/contact/>

Phone: +49 (89) 969772-0

Email: info@caxperts.com

Helpdesk

Available Monday to Friday 08.00 a.m. – 5.00 pm (UTC +1)

Phone: +49 (89) 969772-250

support@caxperts.com