



PlantReModeller

Use Case 1: Import equipment models from PDS into Smart 3D

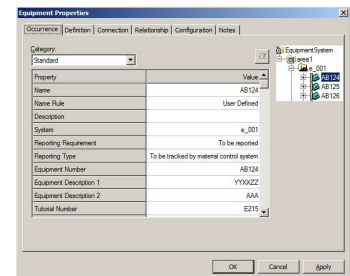
CHALLENGE

Main challenge for the import of equipment data from PDS to Smart 3D is the completeness of graphical and meta data after the conversion

WORKFLOW STEPS

1. Aspects are transferred correctly (insulation, maintenance, operation, etc.)

2. Intelligent Smart 3D nozzles



3. All PDS-MicroStation attachments are imported automatically
4. All attributes can be transferred
5. Imported as a modifiable Designed Equipment

SOLUTION

- **PlantReModeller** import functionality for equipment is designed to be used by project engineers.
 - A straight forward mapping methodology together with an expressive reporting ensures an effective and complete import process

About CAXperts

Our mission is to improve the productivity of our clients by simplifying key tasks and processes. To achieve this we use our detailed knowledge of engineering systems and work processes to deliver engineered efficiency. Learn more at www.caxperts.com

Contact & information:

CAXperts GmbH Carl-Zeiss-Ring 4 www.caxperts.com/pr
 P.: +49 89 96 97 72 0 85737 Ismaning – Germany info@caxperts.com





PlantReModeller

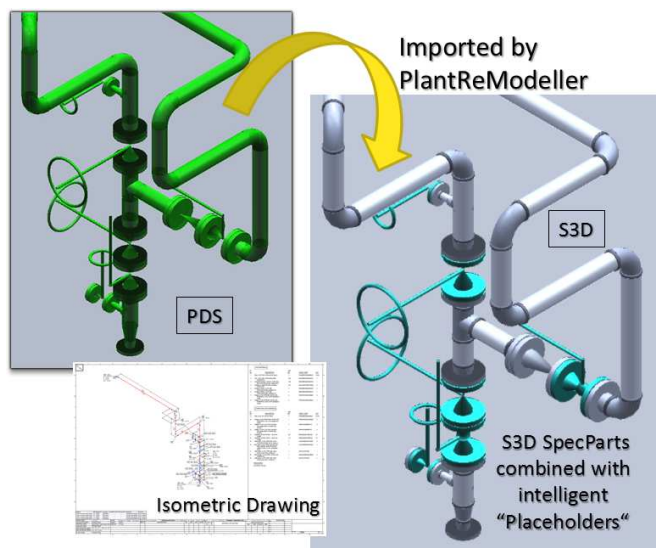
Use Case 2: Import piping models from PDS into Smart 3D

CHALLENGE

Main challenge for the import of piping data from PDS to Smart 3D is the correct placement of all components as spec parts or intelligent “placeholders”. Finally an isometric drawing should be generated.

WORKFLOW STEPS

1. Easy mapping of PDS parts to Smart 3D short codes



2. Intelligent import mechanism with dimension check and fall-back scenario
3. All attributes can be transferred

SOLUTION

- **PlantReModeller** import functionality for piping is designed to be used by project engineers.
 - A straight forward mapping methodology together with an expressive reporting ensures an effective and complete import process

About CAXperts

Our mission is to improve the productivity of our clients by simplifying key tasks and processes. To achieve this we use our detailed knowledge of engineering systems and work processes to deliver engineered efficiency. Learn more at www.caxperts.com

Contact & information:

CAXperts GmbH
P.: +49 89 96 97 72 0

Carl-Zeiss-Ring 4
85737 Ismaning – Germany

www.caxperts.com/pr
info@caxperts.com

